

Product data sheet

Specifications

SQUARE D

Green Premium™



Load center, Homeline, 1 phase, 30 spaces, 60 circuits, 225A convertible main lugs, PoN, NEMA1, gnd bar, combo cover

HOM3060L225PGC

Product availability: Stock - Normally stocked in distribution facility

Price*: 517.32 USD

Main

Product Type	Load Center
Marketing Trade Name	Homeline
Load Center Type	PoN Convertible Mains (lugs)
Rated Current	225 A
Number of Spaces	30
Maximum Number of Single Pole Circuits	60
Enclosure Rating	NEMA 1 indoor enclosure
Cover Type	Combination flush/surface cover
Electrical Connection	Lugs
Provided Equipment	Grounding bar 1)

Complementary

Max Short Circuit Current Rating	10 kA
Maximum Number of Tandem Breakers	30
Number of Phases	1 phase 3 wires
Voltage Rating	120/240 V AC
Wire Size	AWG 4...250 kcmil copper AWG 4...300 kcmil aluminium
Ground Bar	Grounding bar included (not installed)
Busbar Material	Tin plated aluminium: busbar
Enclosure Material	Welded sheet steel
Surface Finish	Baked enamel Gray
Box Number	10
Bus Rated Current	225.0 A
Height	33.8 in (858 mm)
Width	14.3 in (362 mm)
Depth	3.7 in (95 mm)

Environment

Price is "List Price" and may be subject to a trade discount – check with your local distributor or retailer for actual price.

Ambient Air Temperature for Operation	23.0000000000 °F (-5 °C) 104.0000000000 °F (40 °C)
Product Certifications	UL listed file E-6294

Ordering and shipping details

Category	US1DE3C00045
Discount Schedule	DE3C
GTIN	785901977223
Returnability	Yes
Country of origin	US

Packing Units

Unit Type of Package 1	PCE
Number of Units in Package 1	1
Package 1 Height	5.50 in (13.97 cm)
Package 1 Width	16.300 in (41.402 cm)
Package 1 Length	36.400 in (92.456 cm)
Package 1 Weight	30.6 lb(US) (13.9 kg)
Unit Type of Package 2	PAL
Number of Units in Package 2	18
Package 2 Height	40.0000000000 in (101.6 cm)
Package 2 Width	40.0000000000 in (101.6 cm)
Package 2 Length	48.0000000000 in (121.92 cm)
Package 2 Weight	576.518 lb(US) (261.504 kg)

Sustainability

Green Premium™ label is Schneider Electric's commitment to delivering products with best-in-class environmental performance. Green Premium promises compliance with the latest regulations, transparency on environmental impacts, as well as circular and low-CO₂ products.

Guide to assessing product sustainability is a white paper that clarifies global eco-label standards and how to interpret environmental declarations.

[Learn more about Green Premium >](#)

[Guide to assess a product's sustainability >](#)



Transparency RoHS/REACH

Well-being performance

Toxic Heavy Metal Free

Mercury Free

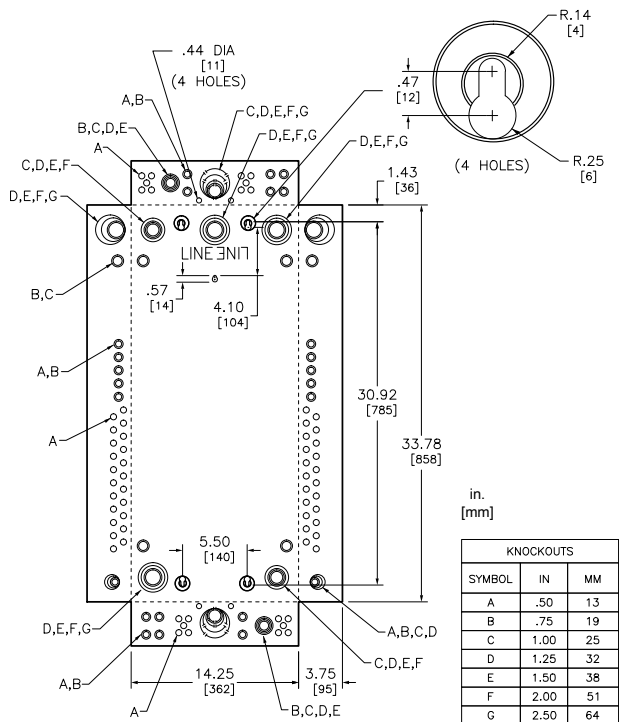
Rohs Exemption Information Yes

Certifications & Standards

Reach Regulation	REACH Declaration
Eu Rohs Directive	Compliant EU RoHS Declaration
China Rohs Regulation	China RoHS declaration Pro-active China RoHS declaration (out of China RoHS legal scope)
Environmental Disclosure	Product Environmental Profile
Circularity Profile	No need of specific recycling operations
California Proposition 65	"WARNING: This product can expose you to chemicals including: Lead and lead compounds, which is known to the State of California to cause cancer and birth defects or other reproductive harm. For more information go to www.P65Warnings.ca.gov "

Technical Illustration

Dimensions



Technical Illustration

Wiring diagram

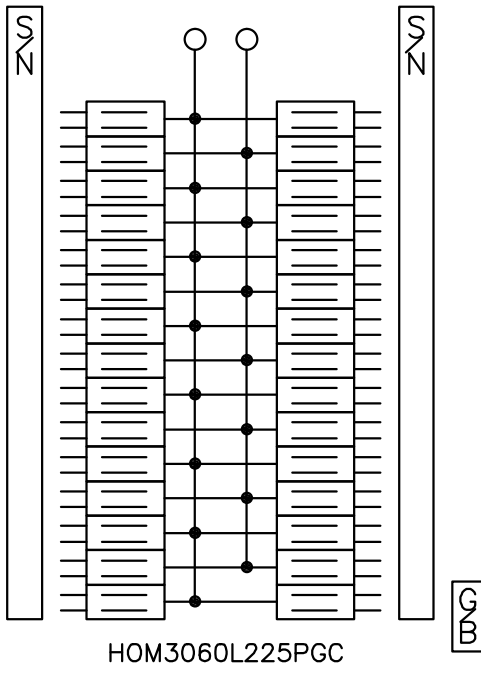
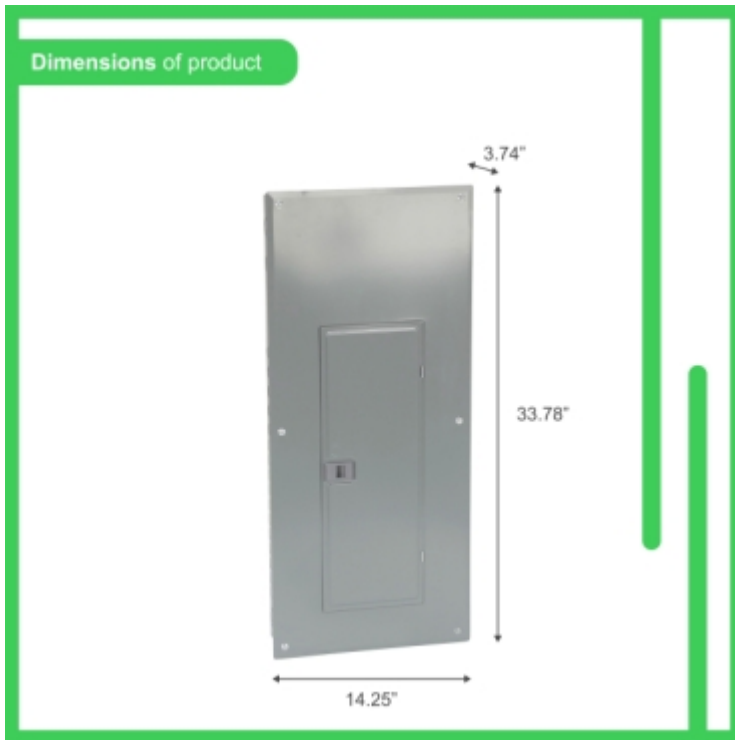


Image of product / Alternate images

Alternative



Up to / Hasta

225 A

Bus Bar Rating / Capacidad de Barra de conexión : 225A max.

120/240 V~ Max., 1Ø, 50/60 Hz.

30 Spaces / Espacios

60 Circuits / Circuitos

Main Lugs
Zapatatas Principales

Indoor
Interior

INCLUDES / INCLUIDOS



x1
PKGTALP2
Ground Bar Kit /
Kit de barra de
puesta a tierra

Surface / Flush
Sobreponer / Empotrar
30.92 lbs / 14.02 kg
W14.2" x H33.8" x D3.8"

